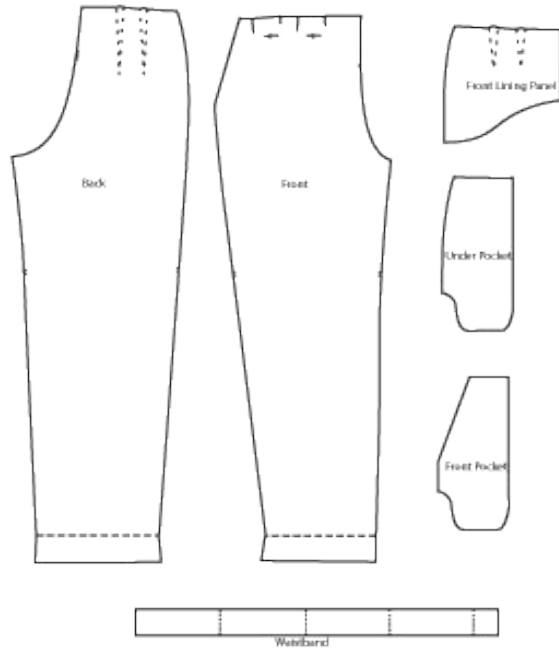


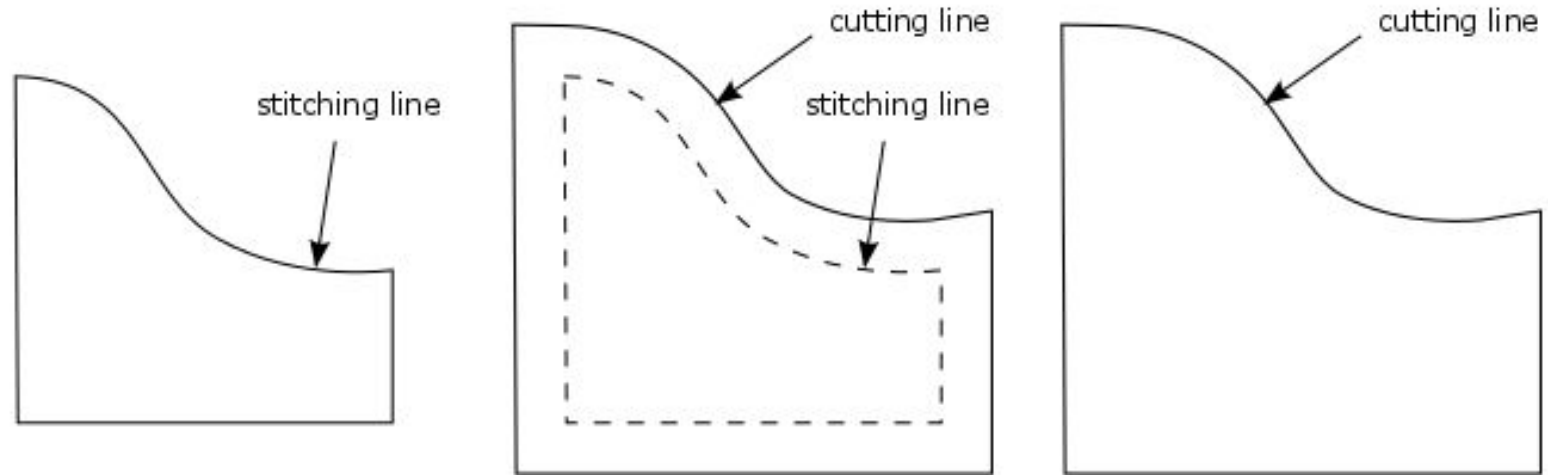


**Forming Shapes**


**Patterns** - template created for different parts of an object



**Seam Allowances (inlay):** area between edge of fabric and stitching line

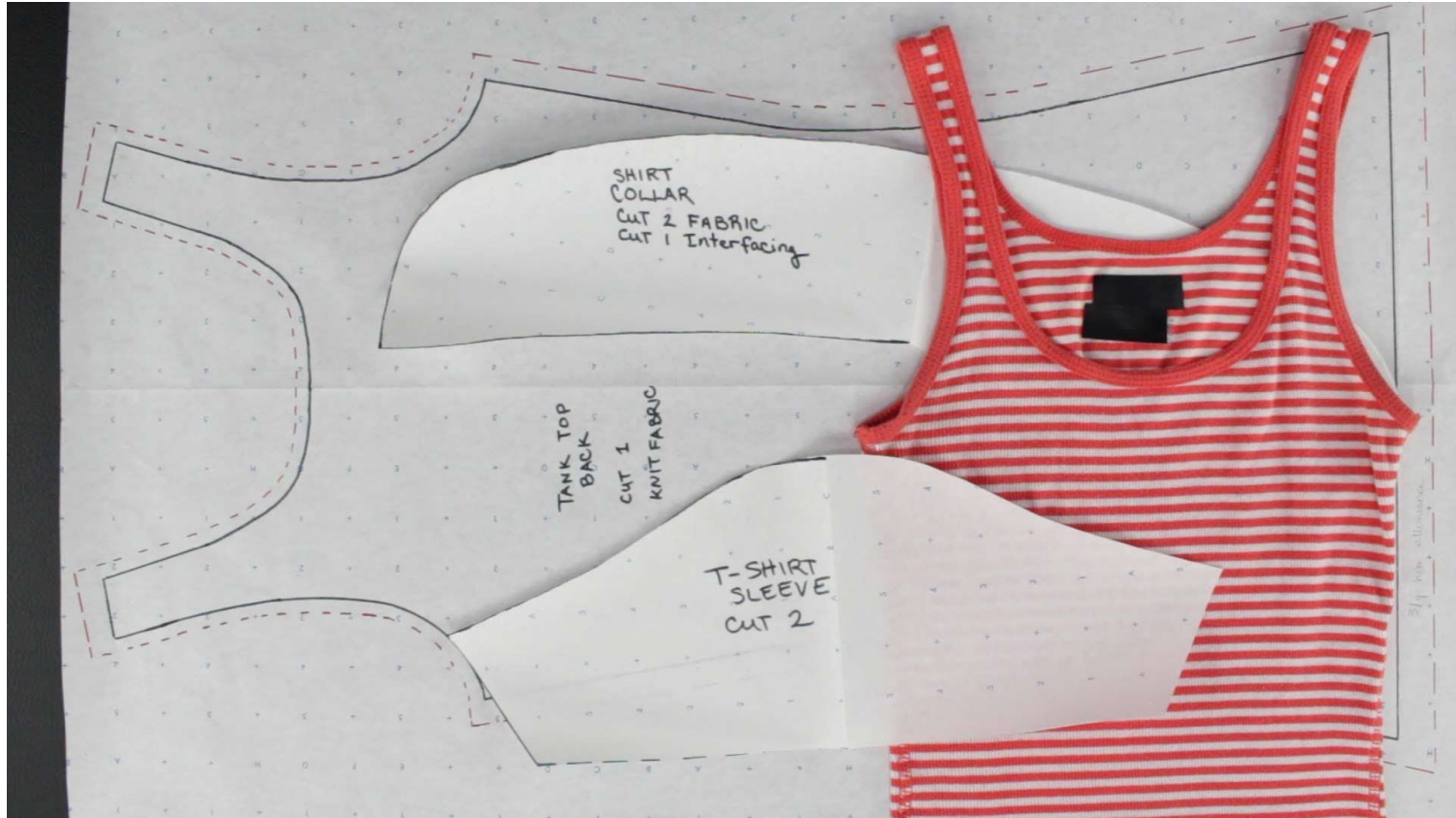


Seam allowance range:  $\frac{1}{4}$ " -  $\frac{1}{2}$ "

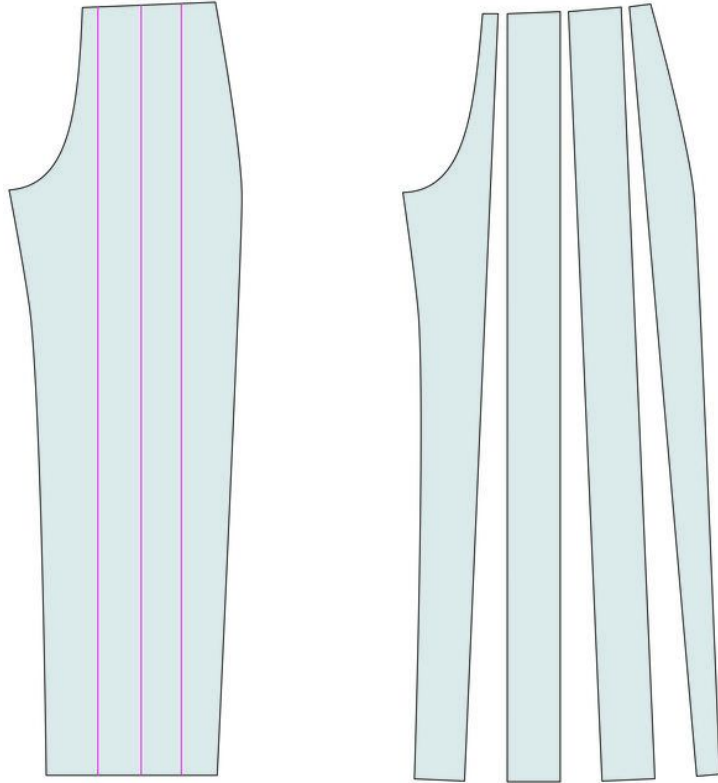


follow the guide  
← on the sewing machine  
or draw your own

# Making your own patterns

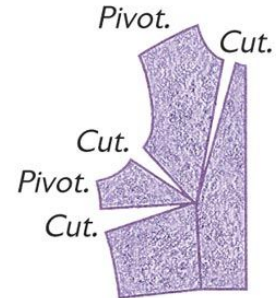
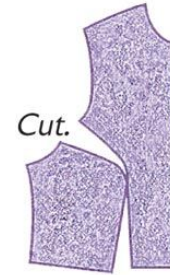
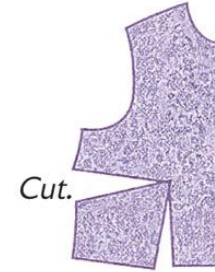
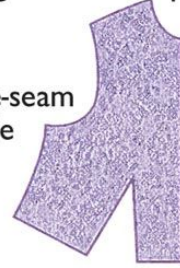


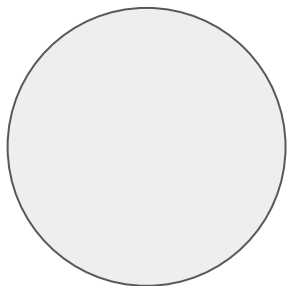
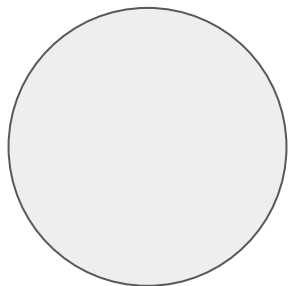
# Slash and Spread Technique



Original front sloper

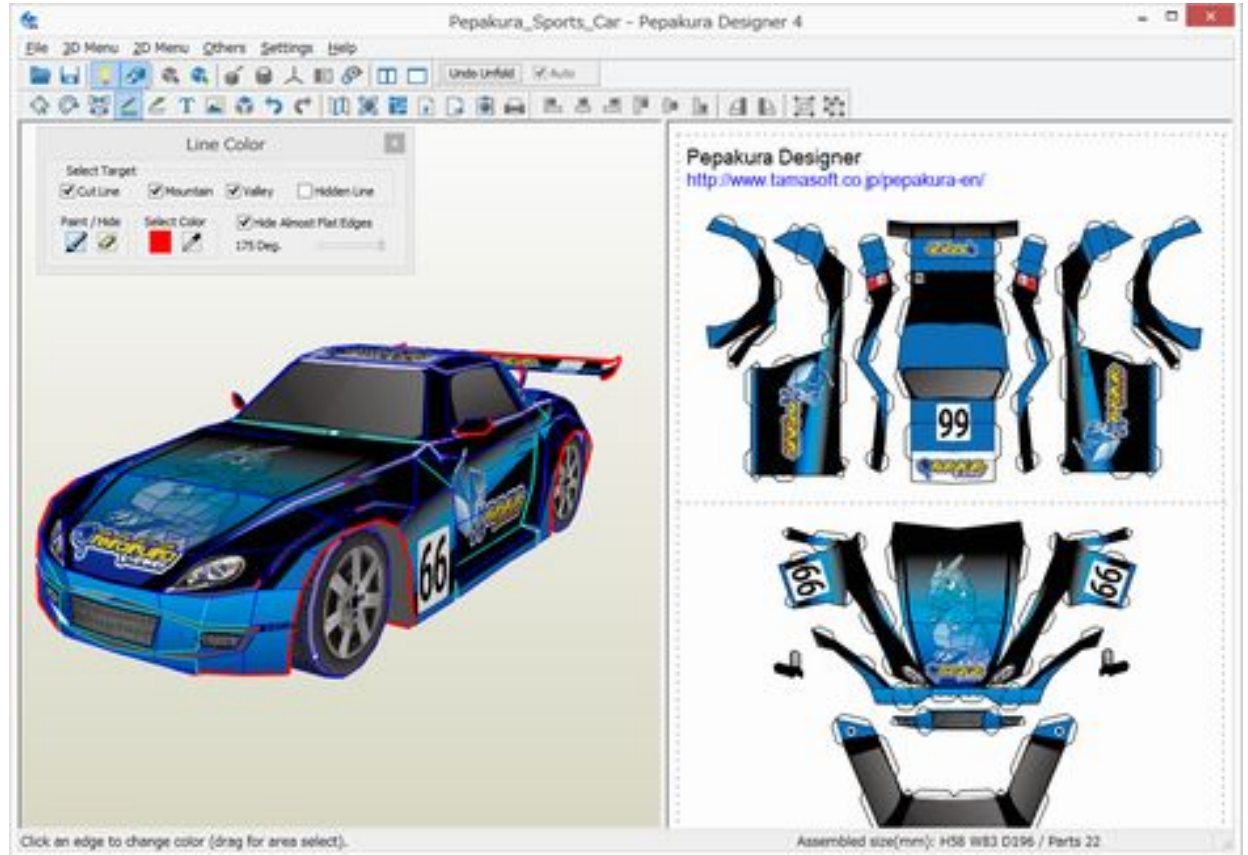
Side-seam angle





# 3D Models to 2D Patterns

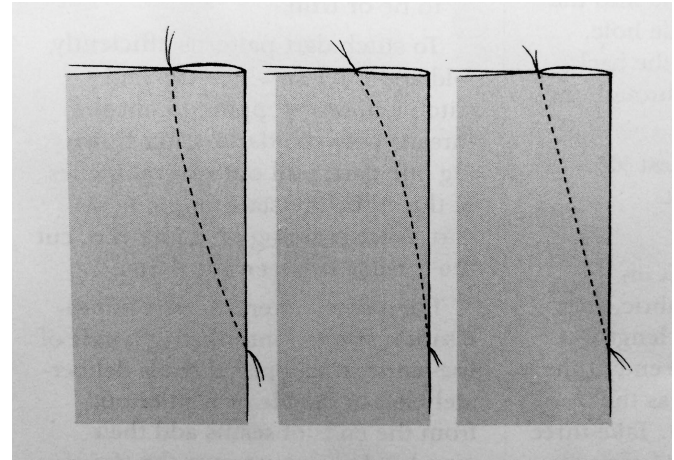
Pepakura

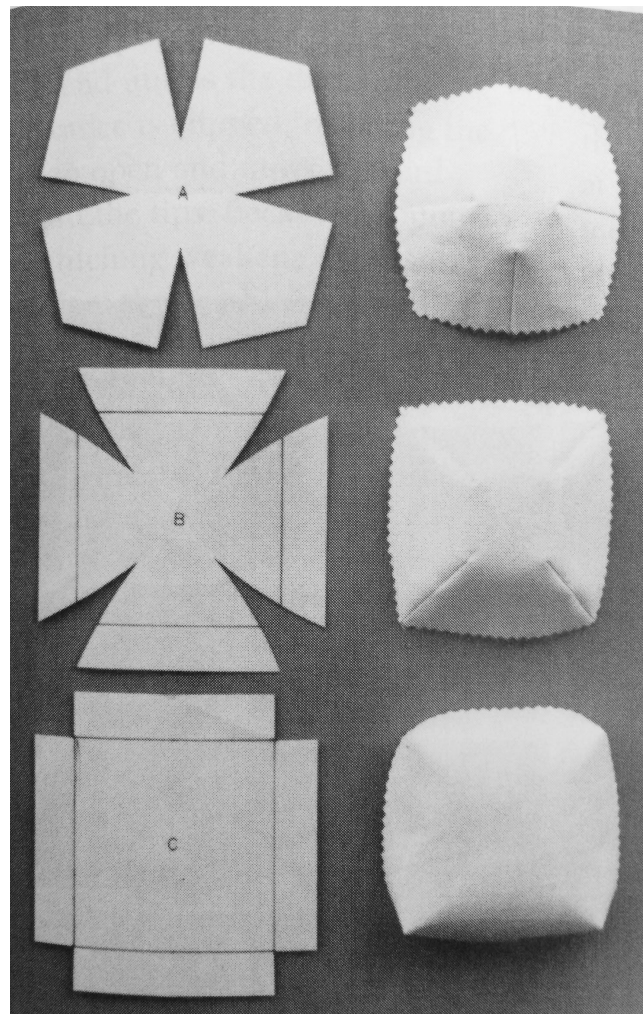
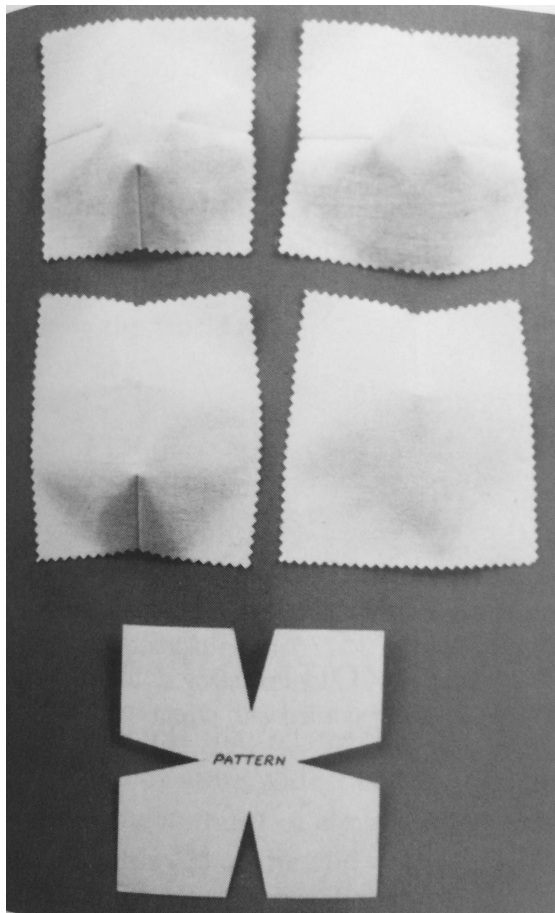


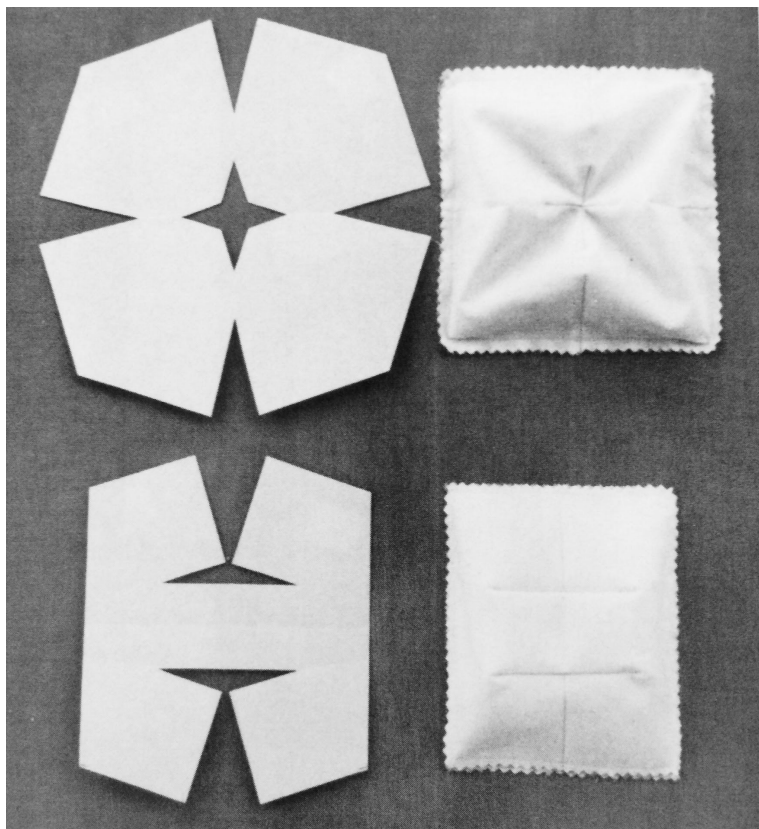


# Darts

Segment of fabric folded (or removed) and stitched to create rises or drop in the structure









## Demo: Darts

Create a pattern for making darts on a 6" x 6" piece of fabric.

Exchange your pattern with another classmate to sew another dart.