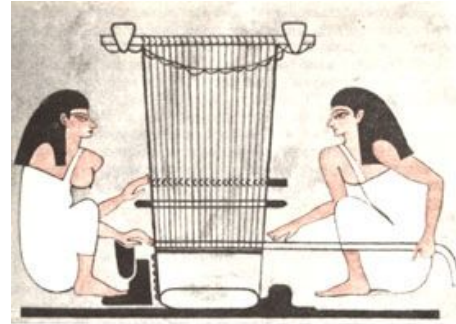




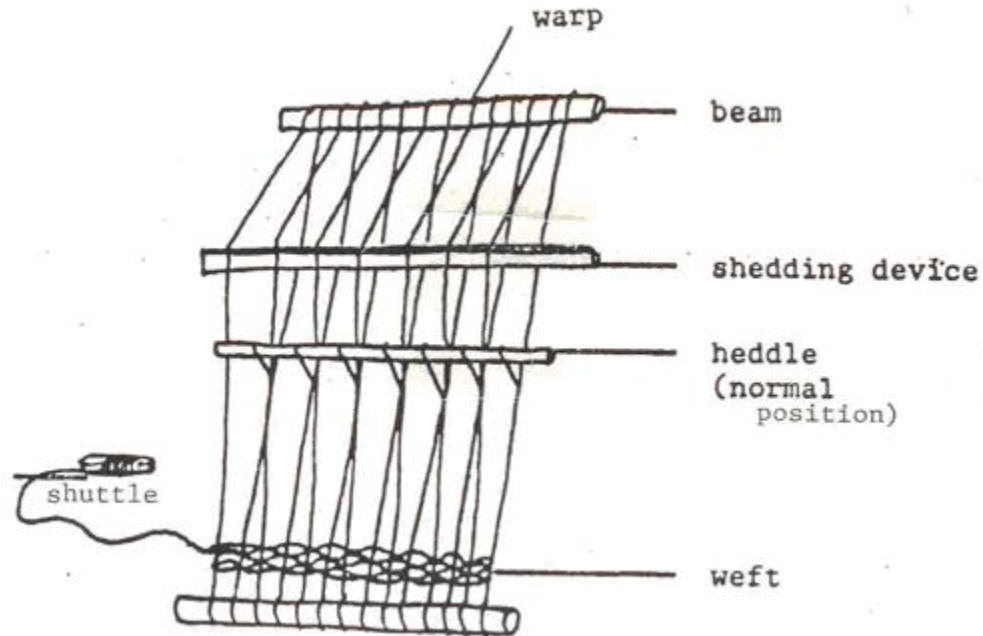
Weaving

Brief history of Weaving

- ~7000 BCE, earliest woven fabric found in Anatolia (Turkey)
- Also appears in China, Peru and Egypt



Weaving Terminology





carpet loom



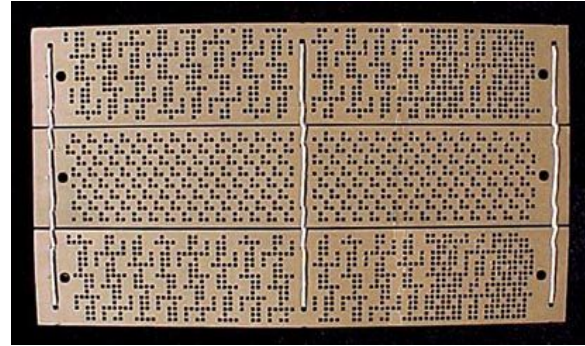
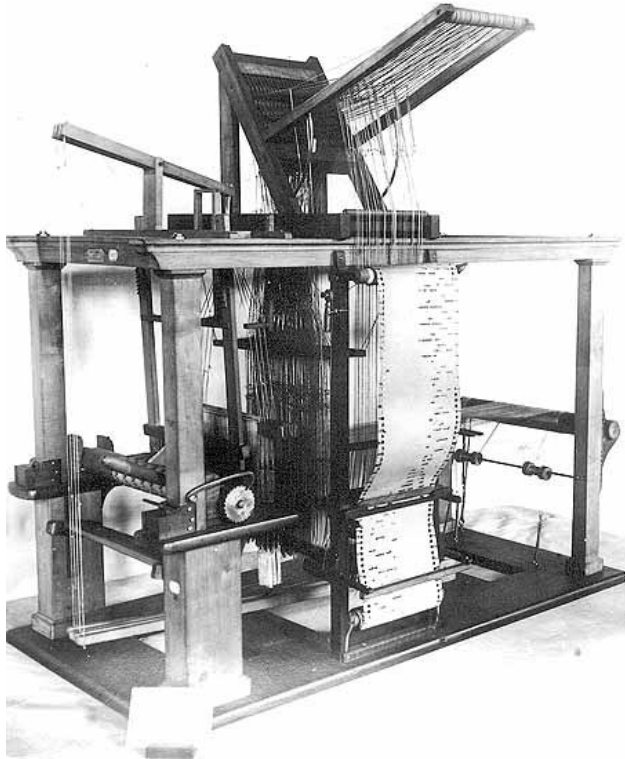
backstrap weaving







Jacquard Loom - 1803

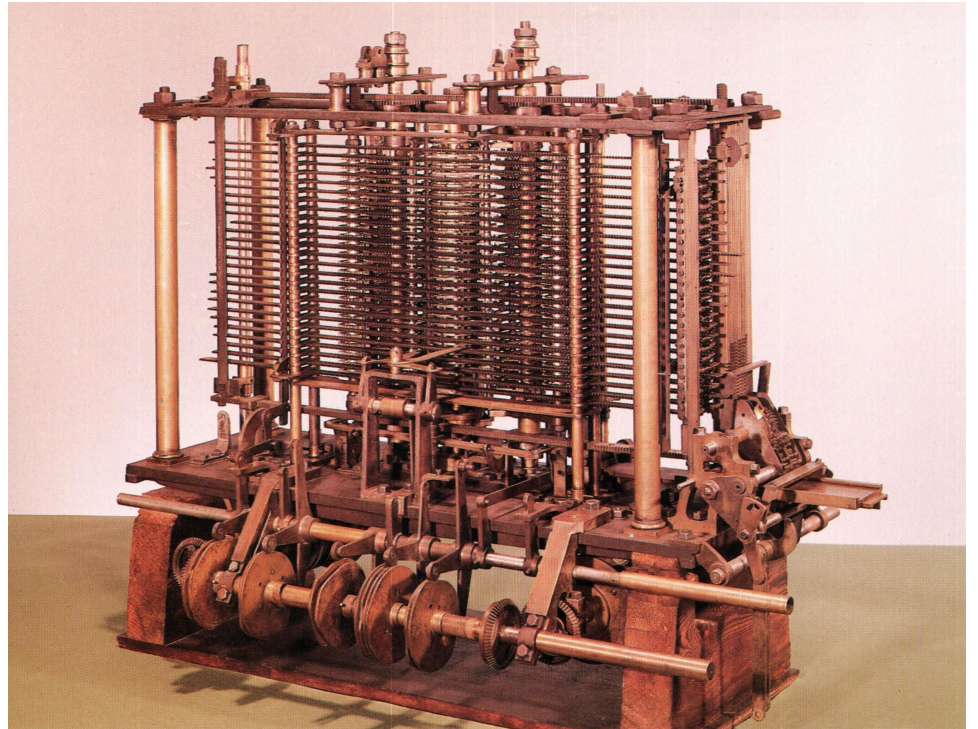


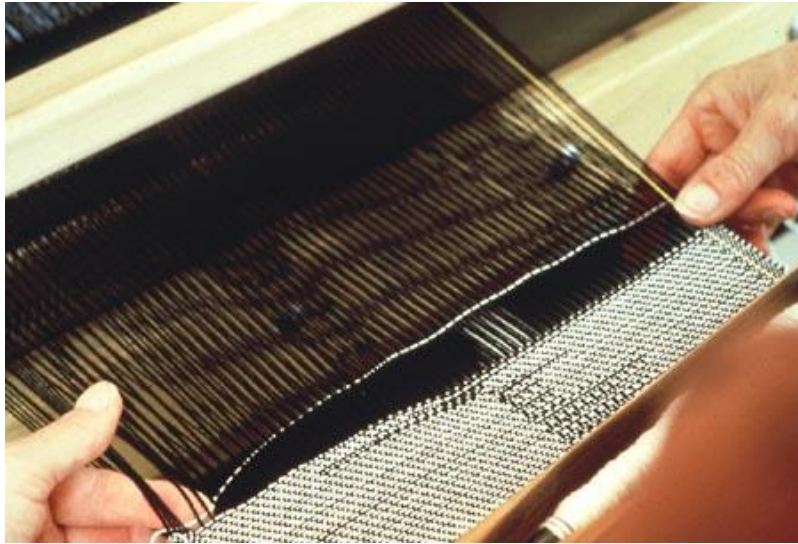


Holes in the cards control which threads are raised for weaving the pattern

Weaving and Computing

- Using punchcards to store and control sequence of operations
- 1837: Charles Babbage and Ada Lovelace, Analytical Engine, first general purpose machine

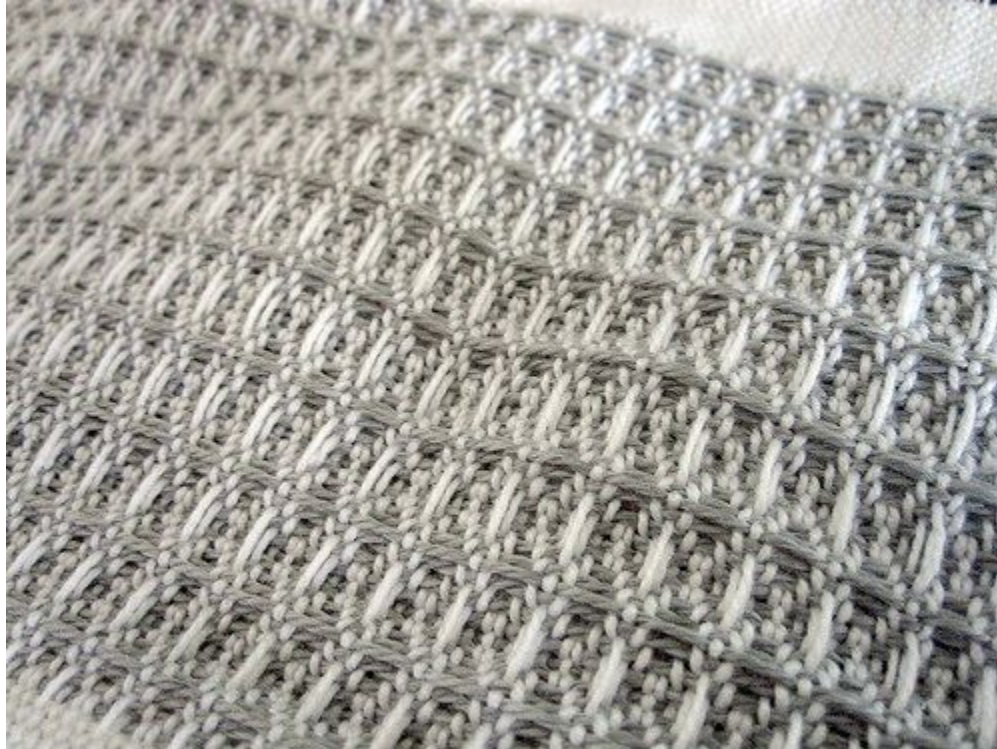




Ingrid Bachmann (1995): Fault
Lines



Woven Pressure Sensor



WEAVING TECHNIQUES

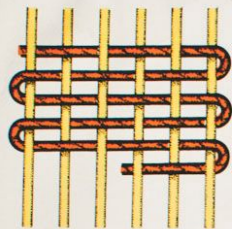


Fig. A Tabby Weaving

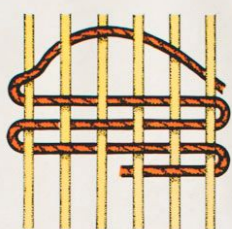


Fig. B Bubbling

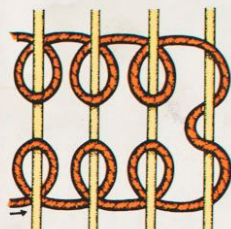


Fig. C Egyptian Knot

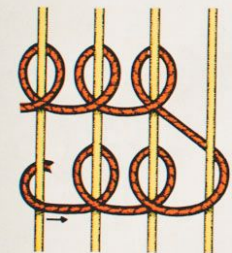


Fig. D Soumak

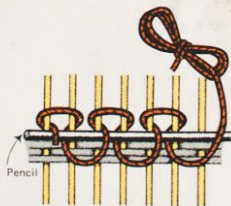


Fig. E Rya on a Pencil

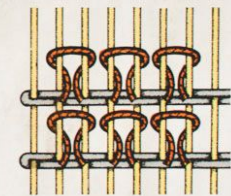


Fig. F Rya (Shag)

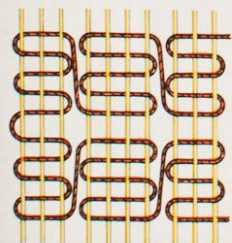


Fig. G Spanish Lace

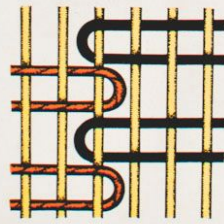


Fig. H Interlocking

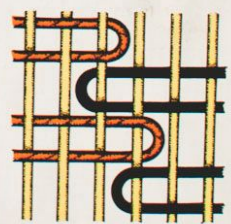


Fig. I Diagonal Interlocking